



# DG Terminals

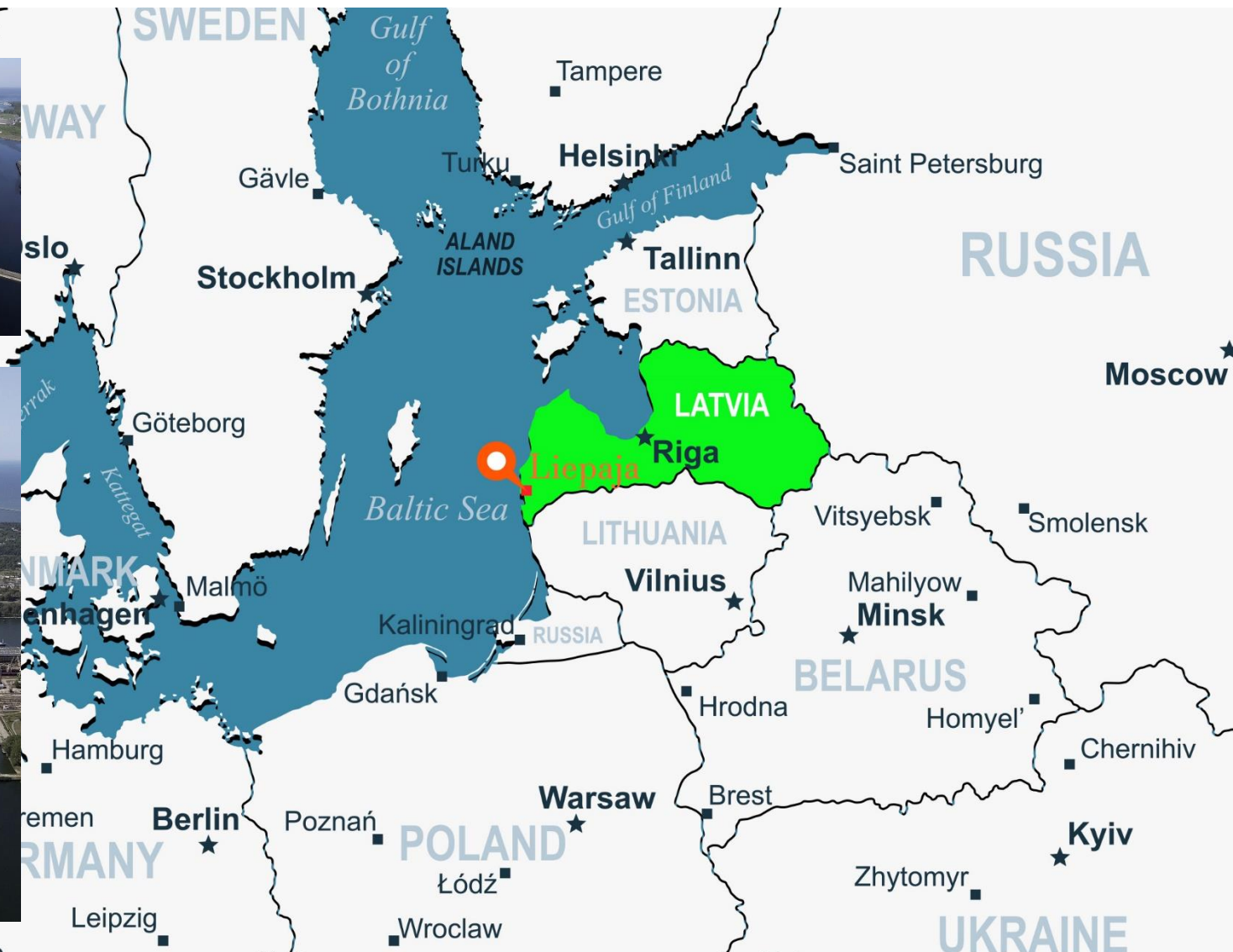
## Liquid Bulk Tank Terminal (Liepaja, Latvia)





# Strategic Location

Liepāja, Latvia







# Introduction

## DG Terminals



- Fully independent (privately held) liquid bulk tank terminal founded in year 2000.
- Part of Liepaja Special Economic Zone (LSEZ status since 2002) in ice-free port of Liepaja, Latvia.
- A fully licensed EU customs warehouse (since 2004).
- Status of an excise warehouse for the excise duty product groups.
- Handling of products coming from/to: CIS; Baltic States; European Union and other regions.
- Operational all year round 24/7.

### Unquestionable Commitment to Quality and Environmental Management Systems:

- GMP+ FSA assured **Storage and transshipment of feed materials** (certified since 2023);
- ISO 9001:2015 **Quality Management System** (certified since 2007);
- ISO 14001:2015 **Environmental Management System** (certified since 2004);
- ISO 27001:2022 **Information security Management System** (certified since 2024);
- ISO 45001:2018 **Occupational health and safety management systems** (certified since 2023);
- ISO 50001:2018 **Energy Management System** (certified since 2020);
- ISO/IEC 17025:2005 **Laboratory** (testing – accredited since 2013);
- State Environmental Service award for Environmental Excellence (awarded on 2025).



## Beyond sustainable operations and towards a completely energy neutral logistics hub

Apart from our full commitment to Quality and Environmental Management Systems the terminal is rapidly approaching a completely **energy neutral logistics hub status** by:

- Employing a photovoltaic on-site power station and
- Transitioning away from natural gas heating
- Planning of further off-site photovoltaic power station development projects







# Key Services

## DG Terminals



- Transshipment and storage of agricultural products, crude oil and crude oil products, petrochemical products and others (including all types of heated products);
- Product blending (and additive blending) in vessel/ in tank;
- Testing of products (analysis and sampling);
- Water, salt and sediment separation; product drying (water removal);
- Product Barrelling; cargo forwarding (also by rail); customs services (clearing of cargoes), bunkering; ship agency services; and others.





# Key Products

## DG Terminals



Transshipment and storage of vegetable oils; feedstock; crude oil and crude oil products, petrochemical products and others (including all types of heated products);

- Vegetable oils (rapeseed oil, sunflower oil, linseed oil (flaxseed oil), soybean oil, etc.);
- Bio products and other agricultural products including liquid fertilizers (molasses, biodiesel, bioethanol, etc.);
- Crude oil and crude oil products (base oils, bitumen, wax, petrolatum, heavy fuel oil, petrol, diesel, cumene, crude benzene, etc.);
- Chemical products (coal benzene, coal tar, methyl-ethyl-ketone (MEK), etc.);
- And many others including specialised/certified products (GMP+, Kosher, etc.)

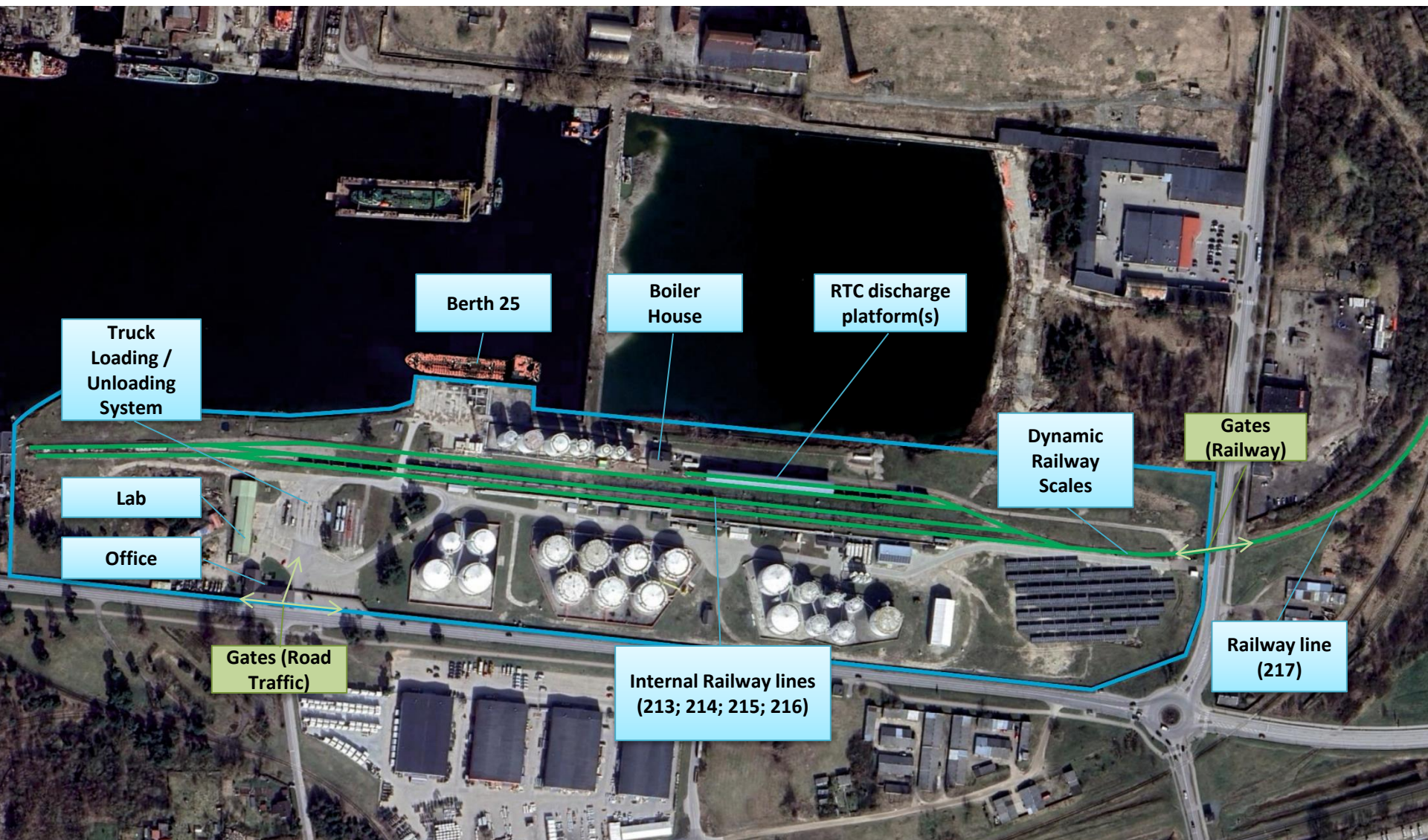






# Layout of the Terminal

DG Terminals







# Infrastructure Overview



## DG Terminals

A highly flexible interchange hub between sea transport/ railway / road / shore tank storage:

- Transshipment from/to (any combination): vessels, railway cars, tank-trucks, flexi-tanks, containers, shore-tanks;
- Cargo handling speeds: up to 300 - 800 m<sup>3</sup>/per hour (depending on product);
- Product heating system through heat exchangers (powered by a pair of 4 MW natural gas boilers and/or electric thermal fluid heaters);
- Product heating with electric railcar heaters
- Product heating with 1.1 MW and 2 MW Steam generation system (powered by 4 MW thermal oil boiler);
- A back-up fuel oil burner available (for a 4 MW boiler);
- Steel, polyethylene, aluminium pipelines;
- Pipeline flushing system by:
  - compressed air,
  - nitrogen (available for designated products);
- Vapour control/recovery system available (depending on product):
  - vapour cooling,
  - vapour scrubber (with activated carbon);
- Double grid electricity connection (650 kW and 400kW) and emergency back up generator system.







# Berth 25

## DG Terminals



BERTH		TANKER
Length (m)	89.5	140
Depth (m)	8 (expected to be deepened)	
Width (m)		25
Draft (m)		6.8
DW (t)		16,000



- Operational all year-round (ice-free port) 24/7.
- Crude oil can be loaded to vessels with capacity up to 9,000 metric tons (depending on port conditions and vessel design).
- Vessels serviced by *LatShipping* agency.



# Road and Railway

## DG Terminals



### Road

- Handling of tank-trucks, flexi-tanks, containers;
- Loading/unloading system can handle up to 18 simultaneously connected trucks;
- Product barrelling is available;
- Fully certified truck scale system in operation 24/7.

### Railroad

- Transshipment platforms allow simultaneous handling of 42 oil product and 14 chemical product railway wagons including handling of containers (from railroad carrier platforms);
- Privately owned 4 railroad lines with loading/unloading stations and access railroad to public railway system (total length more than 3km);
- Total railway wagon capacity in the terminal's territory: 150 railcars;
- Dynamic and static railway scales systems are available.







# Storage Capacity

DG Terminals



- Fully segregated storage by products and clients (no co-mingling);
- Shore tanks – from 100 m<sup>3</sup> to 5,000 m<sup>3</sup> (nominal capacity);
- Total capacity ~ 95,000 m<sup>3</sup> ;
- Insulated storage tanks available (depending on product type);
- Heated storage tanks available (depending on product type);
- Shore tanks with agitators (product in-shore tank blending) available (depending on product type).



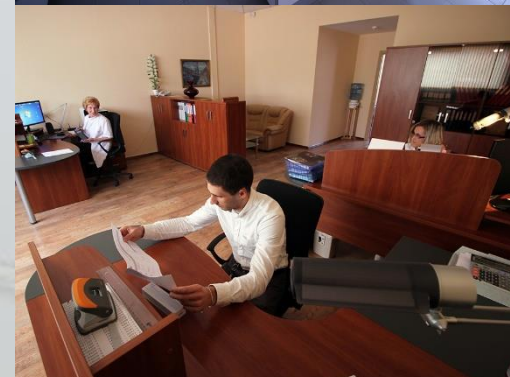


# Accredited Laboratory

DG Terminals



- One of the most sophisticated liquid bulk terminal laboratory in Latvia
- Accredited according to LVS EN ISO/IEC 17025:2005 testing of petroleum products (LATAK-T-485-01-2013).
- Distillation characteristics at atmospheric pressure (ISO 3405);
- Flash Point by Pensky-Martens Closed Cup Tester (ASTM D93);
- Flash and Fire Points by Cleveland Open Cup Tester (ASTM D92);
- Kinematic viscosity and calculation of dynamic viscosity (ISO 3104);
- Sulphur content by Energy Dispersive X-ray Fluorescence Spectrometry (ASTM D4294);
- Water content by Distillation method (ISO 3733);
- Water content by Coulometric Karl Fischer titration method (ISO 12937);
- ASTM Colour of Petroleum Products (ASTM Colour Scale) – (ASTM D1500);
- Density - Hydrometer method (ISO 3675);
- Density - Oscillating U-tube method (ISO 12185);
- Salt content - Electrometric Method (ASTM D3230);
- Colour of Clear Liquids (Platinum-Cobalt Scale) ASTM D1209-05(2011);
- Organic Chloride Content in Crude Oil (ASTM D4929-17) Method A;
- and Others.







# Turnover (Statistics)

DG Terminals



- On average 120 vessels are serviced annually (10 vessels per month);
- On average 35,000 metric Tons product turnover per month (historic monthly maximum 60,000 t);
- 4,500 railway wagons serviced annually.
- 9,000 trucks serviced annually





# DG Terminals

## Liquid Bulk Tank Terminal (Liepaja, Latvia)



# Q & A



LSEZ SIA 'DG Terminals'  
VAT# LV 40003522112

Pulvera iela 33, Liepaja, LV-3405, Latvia  
Tel.: (+371) 6342 4604, (+371) 2800 6699  
E-mail: [hub@dgterminals.lv](mailto:hub@dgterminals.lv)



[www.dgterminals.lv](http://www.dgterminals.lv)





# DG Terminals

## Site Visit (Safety and Legal Requirements)



**Contactless body temperature check might be required.**



**Use of cameras and phone cameras strictly prohibited!**



**Safety helmet and other protective equipment must be worn in the territory of the terminal.**



**No open flames! Smoking allowed only in designated places.**



**Beware of trains and moving machinery at all times!**



**Visitor movement in the territory allowed only under DG Terminals employee guidance.**



**Audio and video surveillance and recording in operation.**



**In case of an emergency please follow instructions from our personnel.**



**Customs Area - All visitors must hold a valid photo ID and visitor permit.**